

The logo for Saniya TRENDZ features the brand name 'Saniya' in a stylized, cursive font, with 'TRENDZ' in a smaller, bold, sans-serif font below it. To the right of the text is a colorful graphic element consisting of overlapping shapes in shades of green, pink, and blue, resembling a stylized leaf or flame.

Saniya
TRENDZ

A woman with long, wavy brown hair is the central focus. She is wearing a dark green, long-sleeved outfit with intricate floral embroidery in pink and white. She is also wearing a matching dark green shawl. Her accessories include large, ornate gold and blue earrings and a gold ring. She is resting her chin on her hand, looking towards the camera with a slight smile. The background is a vibrant, patterned fabric in shades of red, blue, and white.

JOFA COLLECTION
VOL-5 NX



503



The logo for Saniya TRENDZ features the brand name 'Saniya' in a stylized, cursive font, with 'TRENDZ' in a smaller, bold, sans-serif font below it. To the right of the text is a colorful graphic element consisting of three overlapping, curved shapes in shades of green, pink, and blue, resembling a stylized leaf or flame.

Saniya
TRENDZ

A woman with long, wavy brown hair is the central focus. She is wearing a dark green, long-sleeved outfit with intricate floral embroidery in pink and white. She is also wearing a matching dark green shawl. Her accessories include large, ornate gold and blue earrings and a gold ring. She is resting her chin on her hand, looking towards the camera with a slight smile. The background is a vibrant, patterned fabric in shades of red, blue, and white.

JOFA COLLECTION
VOL-5 NX

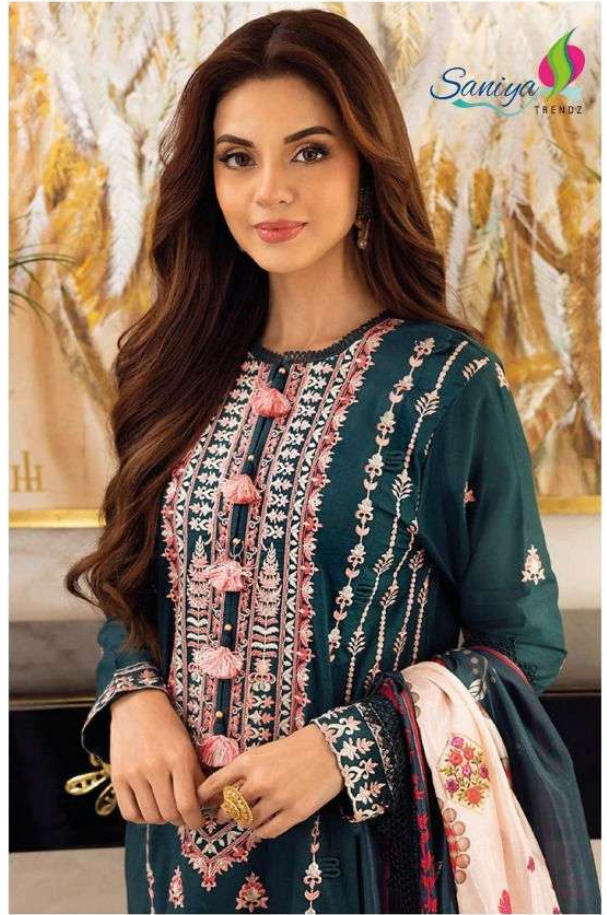




505







504







503



504



505



JOFA COLLECTION

VOL-5 NX





Santiga
ST-503
JOFA COLLECTION



Saviya
TRENDS

ST-504
JOFA COLLECTION

