

RINAZ[®]
FASHION



EMAAN | ADEEL

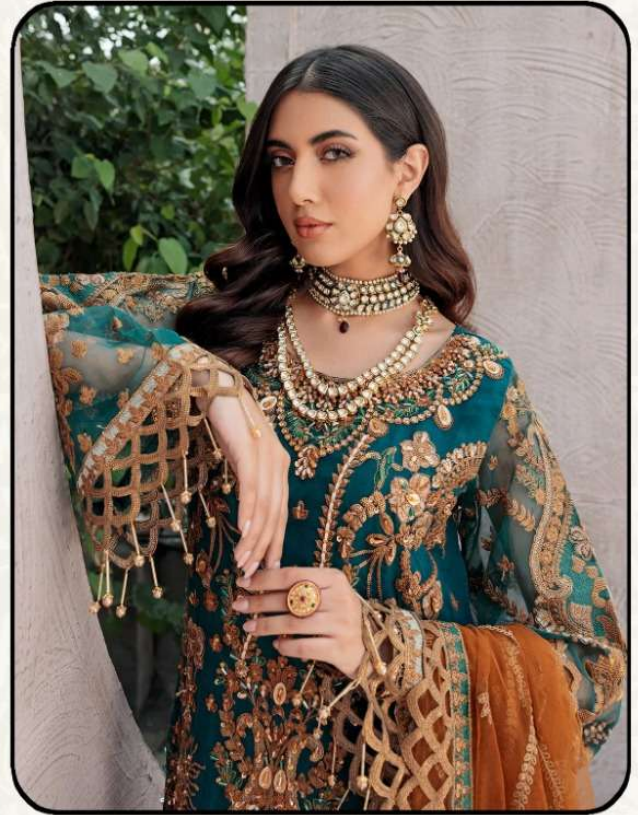
VOL-4

RINAZ[®]
FASHION

D.NO.56001

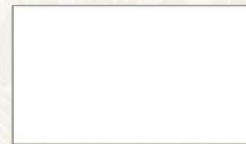


TOP - FOX GEORGETTE
BOTTOM/INNER - NET EMBROIDERY
WITH DULL SHANTUN
DUPATTA - BUTTERFLY NET



WASHING INSTRUCTIONS

DO NOT USE ANY TYPE OF BLEACH OR STAIN REMOVING CHEMICALS
BEFORE CUTTING / STITCHING. FABRIC SHOULD BE SOAKED IN WATER
(ALL COMPONENTS SEPARATELY) FOR 15 MINUTES
DO NOT KEEP WET FABRIC IN TWISTED FORM IN ORDER TO AVOID COPY MKRS !
WASH COLOURED AND WHITE FABRICS SEPARATELY
IRON CLOTHES AT MODERATE TEMPERATURE ! DO NOT DRY FABRIC IN DIRECT SUNLIGHT
(EXTRA LACES , HANGING AND ACCESSORIES ARE NOT INDUDED)



RINAZ[®]
FASHION



EMAAN | ADEEL

VOL-4

RINAZ[®]
FASHION

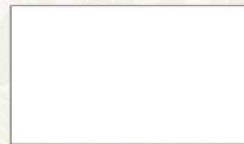
D.NO.56003

TOP - FOX GEORGETTE
BOTTOM/INNER - NET EMBROIDERY
WITH DULL SHANTUN
DUPATTA - BUTTERFLY NET



WASHING INSTRUCTIONS

DO NOT USE ANY TYPE OF BLEACH OR STAIN REMOVING CHEMICALS
BEFORE CUTTING / STITCHING. FABRIC SHOULD BE SOAKED IN WATER
(ALL COMPONENTS SEPARATELY) FOR 15 MINUTES
DO NOT KEEP WET FABRIC IN TWISTED FORM IN ORDER TO AVOID COPY MKRS !
WASH COLOURED AND WHITE FABRICS SEPARATELY
IRON CLOTHES AT MODERATE TEMPERATURE ! DO NOT DRY FABRIC IN DIRECT SUNLIGHT
(EXTRA LACES , HANGING AND ACCESSORIES ARE NOT INDUDED)



RINAZ[®]
FASHION

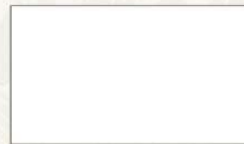
D.NO.56002

TOP - FOX GEORGETTE
BOTTOM/INNER - NET EMBROIDERY
WITH DULL SHANTUN
DUPATTA - BUTTERFLY NET



WASHING INSTRUCTIONS

DO NOT USE ANY TYPE OF BLEACH OR STAIN REMOVING CHEMICALS
BEFORE CUTTING / STITCHING. FABRIC SHOULD BE SOAKED IN WATER
(ALL COMPONENTS SEPARATELY) FOR 15 MINUTES
DO NOT KEEP WET FABRIC IN TWISTED FORM IN ORDER TO AVOID COPY MARKS !
WASH COLOURED AND WHITE FABRICS SEPARATELY
IRON CLOTHES AT MODERATE TEMPERATURE ! DO NOT DRY FABRIC IN DIRECT SUNLIGHT
(EXTRA LACES , HANGING AND ACCESSORIES ARE NOT INCLUDED)



RINAZ
FASHION

D.NO.56004



TOP - FOX GEORGETTE

BOTTOM/INNER - NET EMBROIDERY
WITH DULL SHANTUN

DUPATTA - BUTTERFLY NET

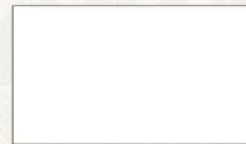


WASHING INSTRUCTIONS

DO NOT USE ANY TYPE OF BLEACH OR STAIN REMOVING CHEMICALS
BEFORE CUTTING / STITCHING. FABRIC SHOULD BE SOAKED IN WATER
(ALL COMPONENTS SEPARATELY) FOR 15 MINUTES

DO NOT KEEP WET FABRIC IN TWISTED FORM IN ORDER TO AVOID COPY MKRS !
WASH COLOURED AND WHITE FABRICS SEPARATELY

IRON CLOTHES AT MODERATE TEMPERATURE ! DO NOT DRY FABRIC IN DIRECT SUNLIGHT
(EXTRA LACES , HANGING AND ACCESSORIES ARE NOT INDUDED)





EMAAN | ADEEL VOL-4

D.No.	TOP	BOTTOM + INNER	DUPATTA
56001	FOX GEORGETTE	NET EMBROIDERY WITH DULL SHANTUN	BUTTERFLY NET
56002	FOX GEORGETTE	NET EMBROIDERY WITH DULL SHANTUN	BUTTERFLY NET
56003	FOX GEORGETTE	NET EMBROIDERY WITH DULL SHANTUN	BUTTERFLY NET
56004	FOX GEORGETTE	NET EMBROIDERY WITH DULL SHANTUN	BUTTERFLY NET

*NOTE : Rate 1399+ GST Extra.



D.NO.56001



D.NO.56002



D.NO.56003



D.NO.56004