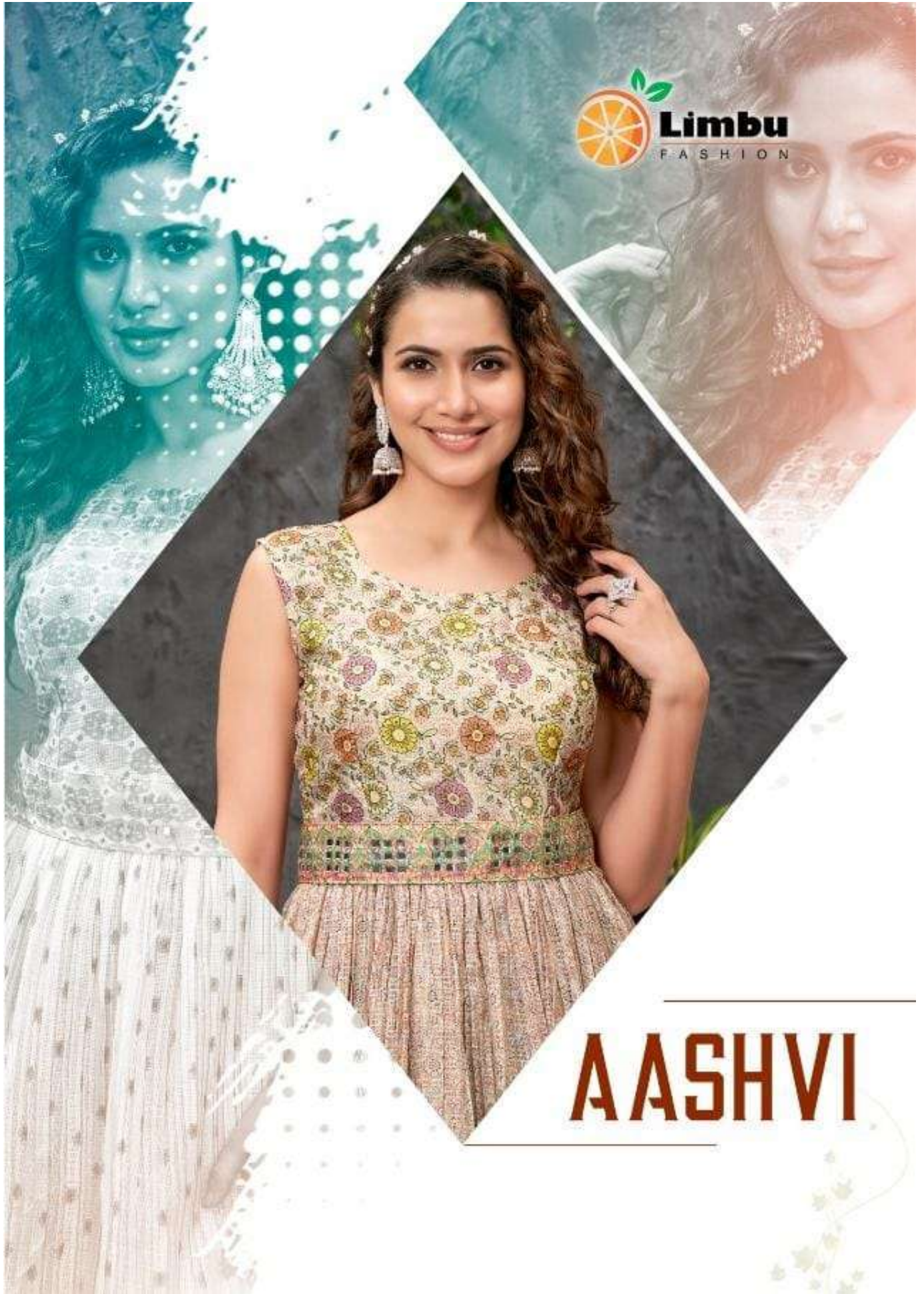




**Limbu**  
FASHION



---

**AASHVI**

---



Colours of happiness

Delight, like warm sunshine on a winter day



D.NO-101





yes, elegance and style is always an integrated part of village attire,  
and when you adopt such style, you feel a sense  
of elegance and spirit of look.

D.NO-102







*Havenly collection*  
exquisite piece of art

D.NO-104





D.NO-105



D.NO-101



D.NO-102



D.NO-103



D.NO-104



D.NO-105

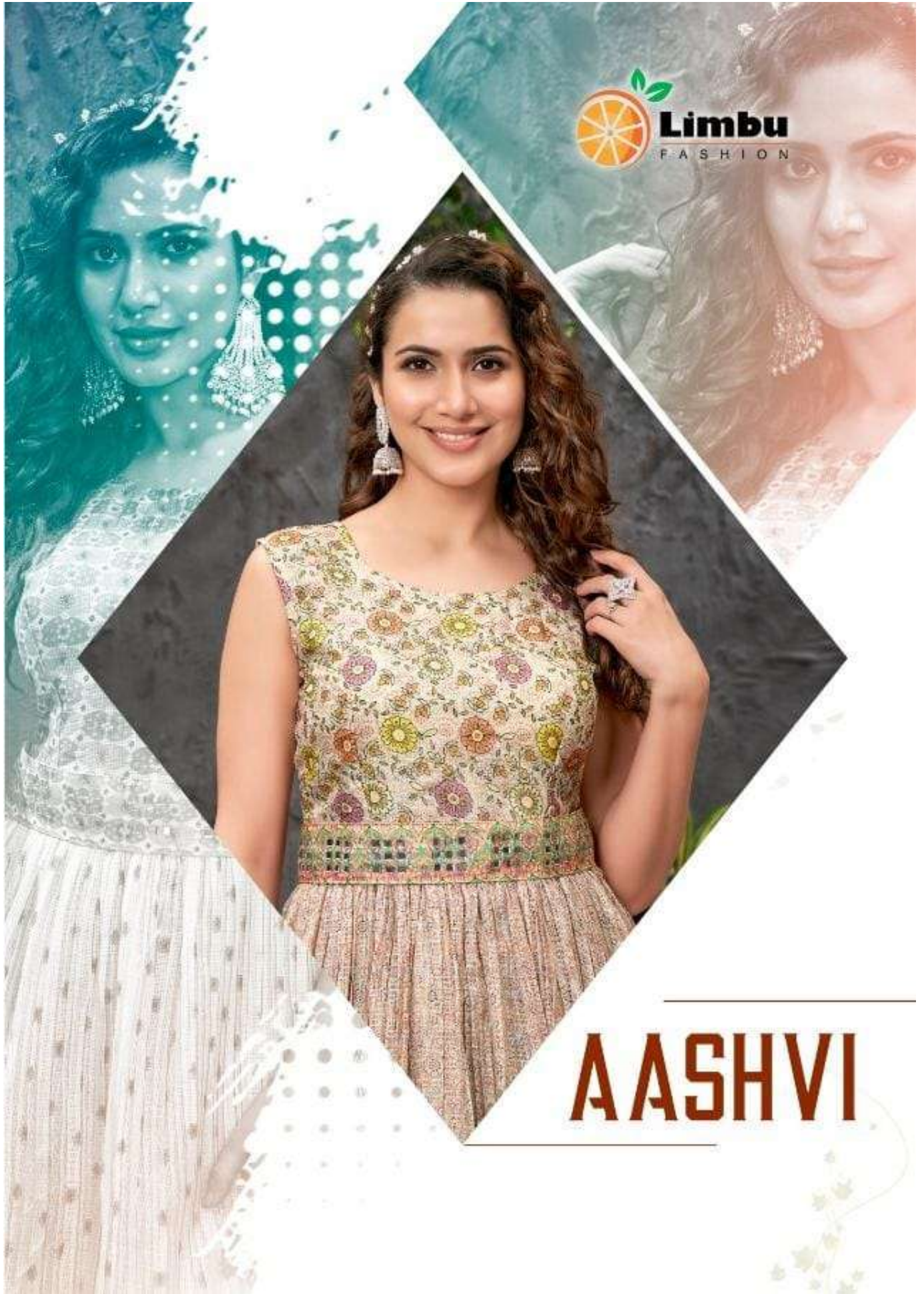








**Limbu**  
FASHION



---

**AASHVI**

---