

RINAZ[®]
FASHION



Ramsha VOL- 21

RINAZ[®]
FASHION

D.NO.53003

TOP - FOX GEORGETTE WITH EMBROIDERY

BOTTOM+INNER - HEAVY SHANTUN

DUPATTA - NAZNIN WITH EMBROIDERY WORK

Ramsha VOL. 21



WASHING INSTRUCTIONS

DO NOT USE ANY TYPE OF BLEACH OR STAIN REMOVING CHEMICALS
BEFORE CUTTING / STITCHING. FABRIC SHOULD BE SOAKED IN WATER
(ALL COMPONENTS SEPARATELY) FOR 15 MINUTES
DO NOT KEEP WET FABRIC IN TWISTED FORM IN ORDER TO AVOID COPY MARKS !
WASH COLOURED AND WHITE FABRICS SEPARATELY
IRON CLOTHES AT MODERATE TEMPERATURE ! DO NOT DRY FABRIC IN DIRECT SUNLIGHT
(EXTRA LACES , HANGING AND ACCESSORIES ARE NOT INCLUDED)





RINAZ[®]
FASHION

D.NO.53001

TOP - FOX GEORGETTE WITH EMBROIDERY

BOTTOM+INNER - HEAVY SHANTUN

DUPATTA - NAZNIN WITH EMBROIDERY WORK

Ramsha vol. 21



WASHING INSTRUCTIONS

DO NOT USE ANY TYPE OF BLEACH OR STAIN REMOVING CHEMICALS
BEFORE CUTTING / STITCHING. FABRIC SHOULD BE SOAKED IN WATER
(ALL COMPONENTS SEPARATELY) FOR 15 MINUTES
DO NOT KEEP WET FABRIC IN TWISTED FORM IN ORDER TO AVOID COPY MKRS !
WASH COLOURED AND WHITE FABRICS SEPARATELY
IRON CLOTHES AT MODERATE TEMPERATURE ! DO NOT DRY FABRIC IN DIRECT SUNLIGHT
(EXTRA LACES , HANGING AND ACCESSORIES ARE NOT INDUDED)





RINAZ FASHION
D.NO.53002



RINAZ[®]
FASHION

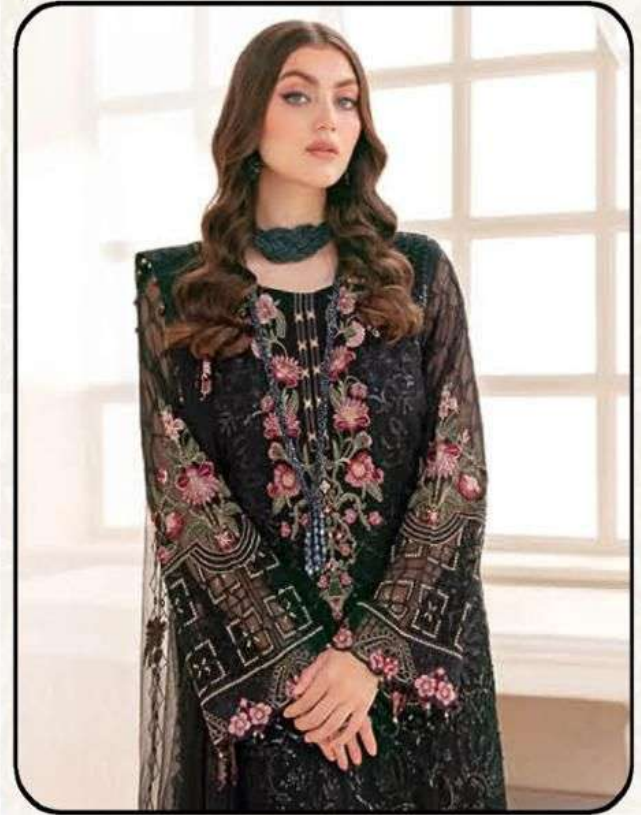
D.NO.53002

TOP - FOX GEORGETTE WITH EMBROIDERY

BOTTOM+INNER - HEAVY SHANTUN

DUPATTA - NET WITH EMBROIDERY WORK

Ramsha VOL. 21



WASHING INSTRUCTIONS

DO NOT USE ANY TYPE OF BLEACH OR STAIN REMOVING CHEMICALS
BEFORE CUTTING / STITCHING. FABRIC SHOULD BE SOAKED IN WATER
(ALL COMPONENTS SEPARATELY) FOR 15 MINUTES
DO NOT KEEP WET FABRIC IN TWISTED FORM IN ORDER TO AVOID COPY MARKS !
WASH COLOURED AND WHITE FABRICS SEPARATELY
IRON CLOTHES AT MODERATE TEMPERATURE ! DO NOT DRY FABRIC IN DIRECT SUNLIGHT
(EXTRA LACES , HANGING AND ACCESSORIES ARE NOT INLUDED)

